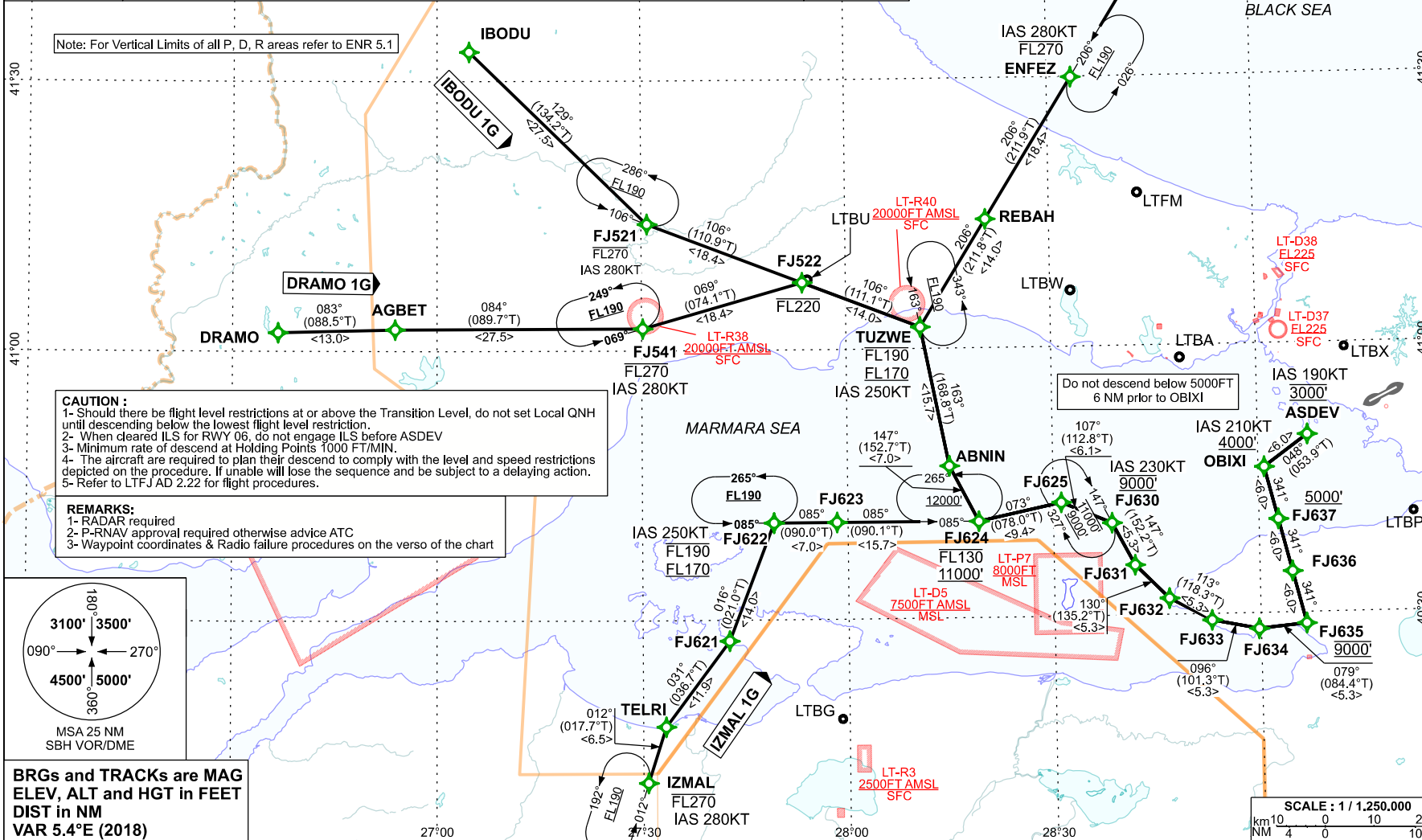


CHANGE: LT-D37 & LT-D38 LIMITS, NOTE

DHMI - ANKARA

DESIGNATOR	FORMAL DESCRIPTION	DESCEND
GINLI 1G	GINLI-ATVAS [R]-ENFEZ [F270-;K280]-REBAH-TUZWE [F190-;F170+;K250;L]-ABNIN [L]-FJ624 [F130-;A11000+;L]-FJ625 [R]-FJ630 [A9000;K230;R]-FJ631 [L]-FJ632 [L]-FJ633 [L]-FJ634 [L]-FJ635 [A9000;L]-FJ636-FJ637 [A5000+]-OBIXI [A4000+;K210;R]-ASDEV [A3000;K190]	As cleared
IBODU 1G	IBODU [R]-FJ521 [F270-;K280;L]-FJ522 [F220-]-TUZWE [F190-;F170+;K250;R]-ABNIN [L]-FJ624 [F130-;A11000+;L]-FJ625 [R]-FJ630 [A9000;K230;R]-FJ631 [L]-FJ632 [L]-FJ633 [L]-FJ634 [L]-FJ635 [A9000;L]-FJ636-FJ637 [A5000+]-OBIXI [A4000+;K210;R]-ASDEV [A3000;K190]	As cleared
DRAMO 1G	DRAMO [L]-AGBET-FJ541 [F270-;K280;L]-FJ522 [F220-]-TUZWE [F190-;F170+;K250;R]-ABNIN [L]-FJ624 [F130-;A11000+;L]-FJ625 [R]-FJ630 [A9000;K230;R]-FJ631 [L]-FJ632 [L]-FJ633 [L]-FJ634 [L]-FJ635 [A9000;L]-FJ636-FJ637 [A5000+]-OBIXI [A4000+;K210;R]-ASDEV [A3000;K190]	As cleared
IZMAL 1G	IZMAL [F270-;K280]-TELRI [R]-FJ621 [L]-FJ622 [F190-;F170+;K250;R]-FJ623-FJ624 [F130-;A11000+;L]-FJ625 [R]-FJ630 [A9000;K230;R]-FJ631 [L]-FJ632 [L]-FJ633 [L]-FJ634 [L]-FJ635 [A9000;L]-FJ636-FJ637 [A5000+]-OBIXI [A4000+;K210;R]-ASDEV [A3000;K190]	As cleared



AIRAC AMDT 02/22

STANDARD ARRIVAL CHART
INSTRUMENT (STAR) - ICAO

TRANSITION ALTITUDE
12000 FT

APP: 127-1-121,25-119,35
TWR: 118.8-120,925

ISTANBUL/S GÖKÇEN
RNAV (GNSS)
RWY 06

AIP
TURKEY

AD 2 LTFJ STAR - 1
24 FEB 22